

DESCRIPTION

Unipower Telecom's LVD400 and LVD600 Series of low-voltage disconnect panels are designed for maximum flexibility. They can be used for either load or battery disconnect. The two mounting position (3.5 inches) high panels can be configured as single or dual (A/B) disconnects. The disconnect contactor is rated at 400 or 600 amperes.

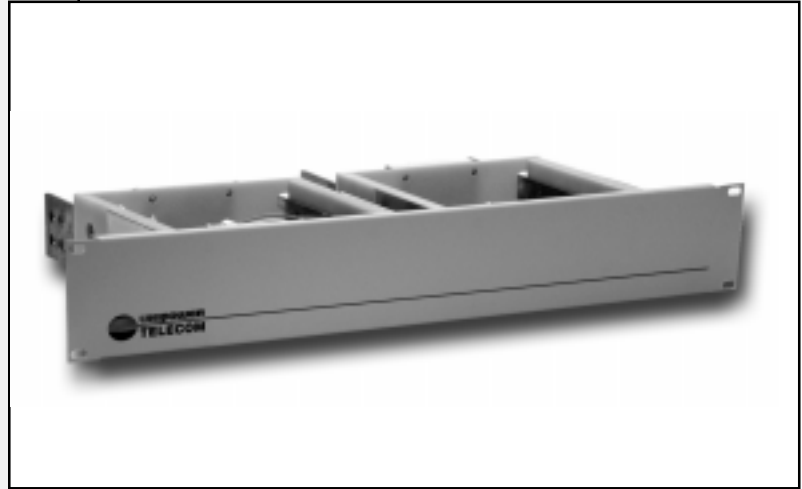
Form C relay contacts indicate an LVD alarm. Disconnect and reconnect voltages are field settable.

The A and B sections of the dual LVD panel can be separately configured for 24 or 48 volts and positive or negative ground. The LVD front panels can be specified for either a 19- or 23-inch relay rack mounting.

SAFETY CERTIFICATIONS

UL1950
CSA 22.2, No. 950
EN60-950

TWO-YEAR WARRANTY



LVD73/23/EEC

LV DISCONNECT PANELS

MODEL	CONFIGURATIONS
LVD400-A	SINGLE 400A
LVD400-A-B	DUAL 400A
LVD600-A	SINGLE 600A
LVD600-A-B	DUAL 600A

FEATURES

- ◆ Two Mounting Positions High: 3.5"
- ◆ 19- or 23-Inch Rack Mounting
- ◆ Single or Dual (A/B) LVDs
- ◆ Current Capacity: 400A or 600A per Load
- ◆ Operating Voltage: 24 or 48VDC
- ◆ Positive or Negative Ground
- ◆ Form C Relay Alarm Contacts
- ◆ LVD in Series with Battery or Load
- ◆ Field Settable Disconnect & Reconnect Voltages

SPECIFICATIONS, LVD400 & LVD600 SERIES

INPUT / OUTPUT

LVD Capacity	400A or 600A Per Load
Configuration	Single or Dual LVD
Voltage, ¹ 48V Version	42-59VDC
24V Version	21-29VDC
Polarity	Positive or Negative Ground
LVD Connection	In Series with Battery or Load
LVD Disconnect Voltage ² 48V Version	42.5 VDC
24V Version	21.25 VDC
LVD Reconnect Voltage ² 48V Version	49.0 VDC
24V Version	24.5 VDC

ALARMS

Alarm Connections Form C Relay Contacts

ENVIRONMENTAL

Operating Temp. Range	-10°C to +50°C
Storage Temp. Range	-40°C to + 85°C
Humidity	0% to 95%, Non-Condensing

SAFETY STANDARDS UL1950, CSA22.2 No.950, EN60-950

PHYSICAL SPECIFICATIONS

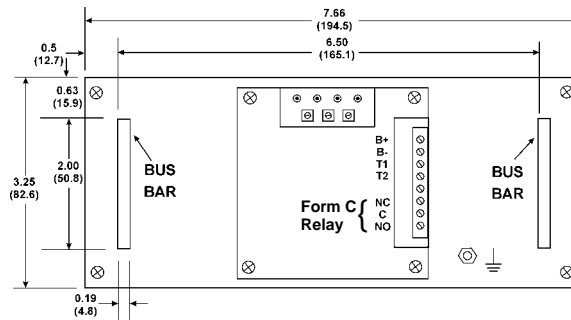
Case Material	Steel
Finish	Powder Coat Gray
Dimensions, Inches (mm)	3.5 H x 19.00 W x 10.50 D (88.9 x 483 x 267)
	3.5 H x 23.00 W x 10.50 D (88.9 x 584 x 267)
Weight, Dual LVD	18 lbs. (8.2 kg.)
Rack Mounting Width	19 or 23 Inches

CONNECTIONS

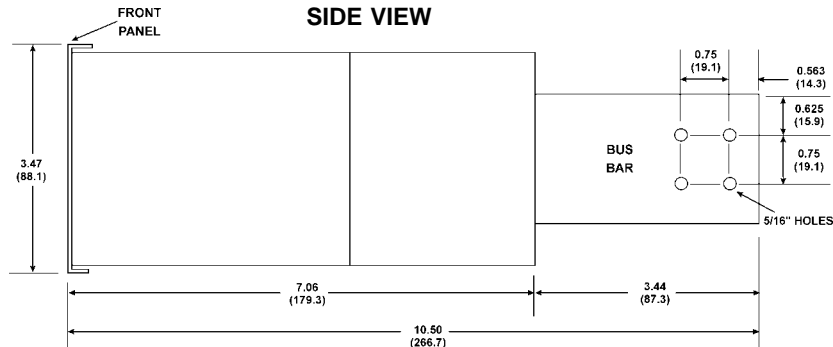
Input & Output	5/16-18 Bolts
Chassis Ground Connection	10-32 Bolt
Alarm Connections	Miniature Screw Terminals

- NOTES:** 1. See Ordering Guide to specify voltage.
2. Factory setting. These voltages are field adjustable.

BACK VIEW, SINGLE UNIT



SIDE VIEW



ORDERING GUIDE

Model No.: LVD400 -A -B -
LVD600

CODE	VOLTAGE
1	48V
3	24V

CODE	PANEL SIZE
19	19" Mounting
23	23" Mounting

Note: For a single unit the A side is specified and used.

ALL DIMENSIONS IN INCHES (mm).
All specifications subject to change without notice.

lvd400-600-revA-01-31-01.pdf